



ORGANIZATION PROFILE

OUR ORIGIN ▼

DiYA Foundation (DF) is a non-political, not-for-profit making social organization irrespective of caste, colour, creed, or religion. DiYA extensively works with the community for upliftment of the deprived and the underprivileged, particularly who lack access to Resources, Services, Information and Market.

DF's geographical focus is mainly on the Rabha Hasong Autonomous Council areas in the bordering states of Assam and Meghalaya. The coverage includes Kamrup rural, Goalpara and Darrang districts of Assam and Ri-bhoi district of Meghalaya. For Livelihoods, the major operational area is spread over five development blocks of Kamrup Rural District of Assam namely Rani, Chayani Barduar, Rampur, Chhaygaon, Bongaon and Boko Development Block and Jirang Development Block of Ri-Bhoi District in Meghalaya. For the Health-related interventions, DF has reached out the districts of Goalpara and Darrang in Assam through its channel partners and CSO networks.

HIGHLIGHTS ▼

A total of 13 civil society organizations across 13 districts of Assam came together & built a strong Alliance in Assam for promoting and advocating Respectful Maternity Care (RMC)

More than 2000 households adopted our Integrated Homestead Cultivation model to reduce crop damage by wild elephants

More than 500 households successfully adopted our model of low-cost hygienic sheds for piggery, poultry and goatery

78 trained Sathi's benefitting 54,600 women under the Digital Literacy program

20 trainees have been trained and own tailoring training centres (Skill development program)

THEMATIC AREAS ▼



Livelihood



Health



Education

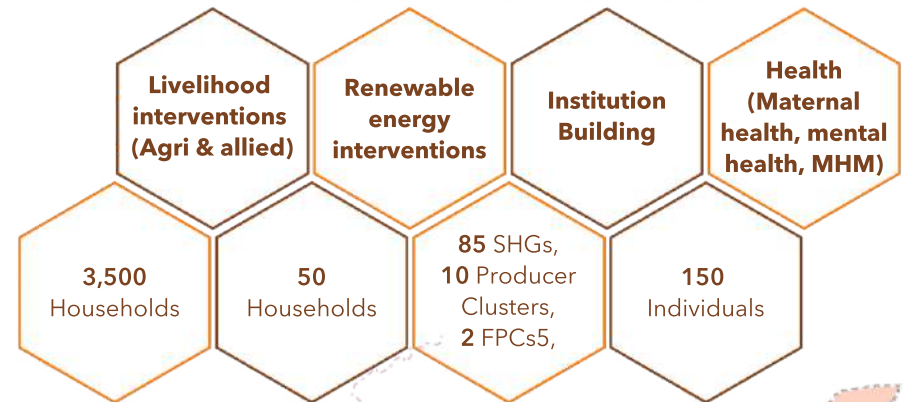


Gender & Governance



Well being

INTERVENTIONS & OUTREACH ▼



District map highlighting areas of operation in Assam

The community we work with is a tribal community which are majorly remote villages in the fringes of forests. People lack the necessary resources, infrastructure, facilities and have accessibility issues. Lack of access and energy is majorly hampering the development in the region and people follow lot of indigenous and traditional practices.



GENERAL

SIGNIFICANTLY HIGH POPULATION OF TRIBAL HOUSEHOLDS; DEPRIVED HOUSEHOLDS WITH EVIDENT MIGRATION IN THE REGION

- Social profile: ST population 92% (R) 25% (G); No caste & Tribe households 38% (K) 57% (G) 63% (D); Other 41% (K) 31% (D);
- SC/ST households which are deprived are high at :14% (K) 21% (G) 5% (D) 64% (R)
- Literacy is at par with national average at 76% (K) 67% (G) 63% (D) 76% (R) vs. 78% (I)
- Female literacy is mostly higher than national average at 69% (K) 63% (G) 58% (D) 74% (R) vs. 54% (I)
- Migration is very high in the region with overall migrants being 33% (K) 34% (G) 43% (D) 23% (I)



LIVELIHOOD

MAJORITY INCOME SOURCE FROM CULTIVATION & CASUAL LABOUR; HIGH UNIRRIGATED LAND, LOW CULTIVATION WITH LOW CROPPING INTENSITY; LOW INCOME

- Households with monthly income of highest member less than Rs. 5000 are very high at 71% (G) 80% (G) 82% (D) 76% (R) vs. 75% (I)
- High section of landless Households at 55% (K) 67% (G) 53% (D) 69% (I)
- Total unirrigated land being 58% (K) 70% (G) 33% (D) 43% (I)
- Land with assured irrigation for 2 crops is very low at 28% (K) 18% (G) 63% (D) 40% (R) with mostly rainfed agriculture and mono-cropping practice
- Average rainfall in monsoon (June-Sept) for the region on an average is 1,234 mm with 1710mm for (G)
- Average rainfall in monsoon (June-Sept) for the region on an average is 1,234 mm with 1710mm for (G)
- Region has high forest cover with 27% (K) 20% (G) 65% (D) 35% (I)
- Households dependant on manual casual labour as major income source is very high at 43% (K) 53% (G) 50% (D) 37% (I);
- Followed by households dependant on agriculture at 21% (K) 23% (G) 28% (D) 45% (R) vs. 30% (I)
- Households employed under MGNREGA is low in Assam region at only 20% vs. 97% in Ri-bhoi of Meghalaya (Average days availed in Assam region low at 30 days out of 100 days)



HEALTH

SCOPE FOR IMPROVEMENT IN MATERNAL HEALTH IN TERMS OF AVAILING GOVT. HEALTHCARE; INSTITUTIONAL DELIVERIES CAN ALSO BE IMPROVED

- Maternal mortality rate (2014-16) is high at 237 for Assam (per 1,00,000 live births) vs. 130 (I)
- Infant mortality rate (2016) is on the higher side at 44 (A) vs. 39 (M) vs. 34 (I) per 1000 live births
- Institutional deliveries are 96% for Assam region and very low at 45% for Ri Bhoi
- Pregnant women receiving 4 ANC checkups are low at 64% for Assam region and 59% for Ri bhoi, Meghalaya
- Pregnant women having severe anaemia (Hb<7) treated at institution are high at 85% for Assam region and 63% (R)

*Sources:

Census 2011, Socio Economic & Caste Census 2011, Hydromet 2014-18 District agricultural contingency plan 2011, MGNREGA 2019-20, HMIS 2019-20

4 VALUE PROPOSITION

Our value proposition is to have the community benefit and progress from the developmental interventions. Strong institutions form the basis for work involving community in all stages of the programs - planning, implementation, & monitoring. Thus, we believe a strong community connect & partnerships combined with our long-term efforts in the region should bring change.



LIVELIHOODS

- Strengthen farm/non-farm based livelihoods and skills, increasing income
- Build low-cost livelihood models, easily adoptable by community
- Revive community practices

Low cost hygienic sheds built for piggery for reducing mortality and improving income



ENTREPRENEURSHIP

- Support development of entrepreneurs along with knowledge, training & market linkages esp. for vulnerable for reliable income
- Promote supply chain approach and collective marketing models

Homestead cultivation of black pepper promoted through women collectives aggregated for value addition



HEALTH & WELL-BEING

- Advocacy for improved infrastructure & facilities
- Formed alliance with CSOs for Respectful Maternal Care
- Provide taboo health services like Mental health care in the region through partners

Stakeholders meet for promoting Respectful Maternal Care through the White Ribbon Alliance, Assam



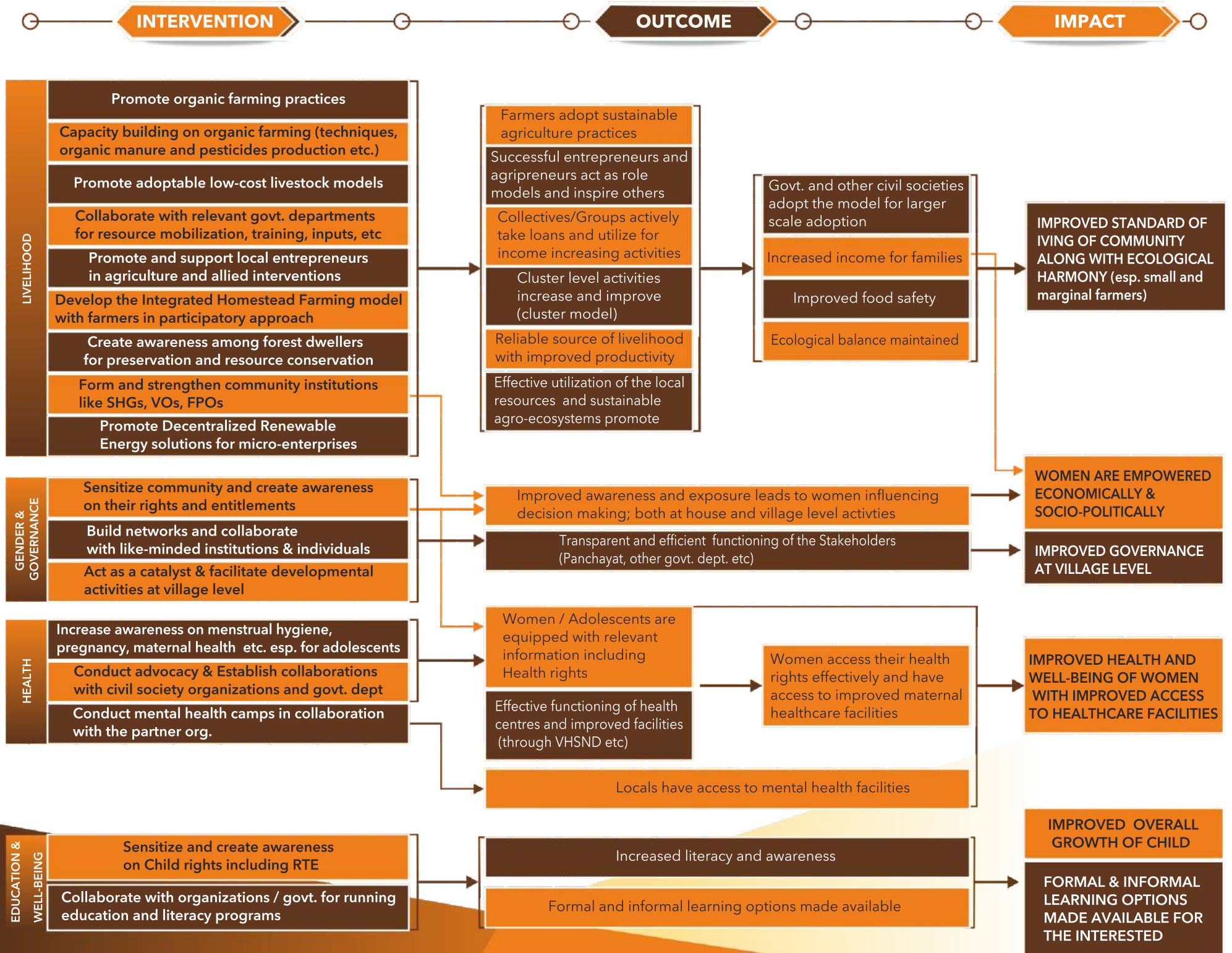
GOVERNANCE

- Sensitize community (esp. women) on Panchayat related activities like
- Gram Sabhas, GPDP, MGNREGA, ,
- Increase community awareness on rights and entitlements

Improved community involvement in MGNREGA activities

Our Theory of Change details out the pathways along which we look to bring about change, from Intervention to Outcome to Impact. This also highlights the cross-thematic nature of our work and the inter-linkages between different change pathways.


VISION: "TO BE A CHANGE AGENT ESPECIALLY FOR THE UNDER-PRIVILEGED & DEPRIVED CLASS OF RURAL AND URBAN AREAS, BUILDING SELF-SUSTAINING COMMUNITY, EMPOWERING THEM FOR TOTAL GROWTH TOWARDS A CIVIL SOCIETY"



6 SUSTAINABLE DEVELOPMENT GOALS TARGETED


Our work spans across a wide spectrum of Sustainable Development Goals (SDGs) and outcomes. The specific number outcomes have been paraphrased to reflect our stated outcomes more effectively.

1 NO POVERTY End poverty in all its forms everywhere




- 1.1. Eradicate extreme poverty
- 1.2. Reduce at least by half the proportion of men, women and children of all ages living in poverty
- 1.4. Ensure that all men and women, have equal rights to economic resources

2 ZERO HUNGER End hunger, achieve food security and improved nutrition and promote sustainable agriculture




- 2.1. Ensure access to nutritious and sufficient food all year
- 2.2. Meet nutritional requirement of adolescents, pregnant and lactating women
- 2.3. Double the agricultural productivity and income

3 GOOD HEALTH AND WELL-BEING End poverty in all its forms everywhere



- 1.1. Eradicate extreme poverty
- 1.2. Reduce at least by half the proportion of men, women and children of all ages living in poverty
- 1.4. Ensure that all men and women, have equal rights to economic resources

4 QUALITY EDUCATION Ensure healthy lives and promote well-being for all at all ages



- 3.1. Reduce the global maternal mortality ratio
- 3.2. End preventable deaths of all under 5 years of age
- 3.4. Reduce by one third premature mortality
- 3.7. Ensure universal access to sexual and reproductive health-care services

5 GENDER EQUALITY Ensure inclusive and equitable quality education and promote lifelong learning opportunities for all




- 5.3. Eliminate harmful practices child/early/force marriage
- 5.6. Ensure universal access to sexual and reproductive health and reproductive rights.
- 5.b. Enhance the use of enabling technology to promote the empowerment of women

6 CLEAN WATER AND SANITATION Ensure availability and sustainable management of water and sanitation for all




- 6.2. Achieve access to sanitation and hygiene
- 6.b. Support and strengthen the participation of local communities in improving water and sanitation management

7 AFFORDABLE AND CLEAN ENERGY Ensure access to affordable, reliable, sustainable and modern energy for all



- 7.1. Ensure universal access to affordable, reliable, and modern energy services
- 7.2. Increase substantially the share of renewable energy

8 DECENT WORK AND ECONOMIC GROWTH Promote sustained, inclusive, & sustainable economic growth, full & productive employment, & decent work for all




- 8.5. Achieve employment and decent work and equal pay for work of equal value
- 8.6. Substantially reduce the proportion of youth not in employment, education, or training

9 INDUSTRY, INNOVATION AND INFRASTRUCTURE Build resilient infrastructure, promote inclusive and sustainable Industrialization and foster innovation



- 9.3. Increase the access of industrial and enterprises to financial services and value chains and markets
- 9.c. Increase access to information and communications technology and affordable access to the Internet.

10 REDUCED INEQUALITIES Reduce inequality within and among countries



- 10.1. Achieve and sustain income growth of the bottom 40 per cent of the population
- 10.2. Empower and promote the social, economic, and political inclusion of all

15 LIFE ON LAND Protect, restore, and promote sustainable use of terrestrial ecosystems, sustainably manage forests, combat desertification, and halt and reverse land degradation and halt biodiversity loss



- 15.2. Promote the implementation of sustainable management
- 15.a. Mobilize & increase financial resources to conserve and sustainably use biodiversity and ecosystems

16 PEACE, JUSTICE AND STRONG INSTITUTION Promote peaceful and inclusive societies for sustainable development, provide access to justice for all and build effective, accountable & inclusive institutions at all levels

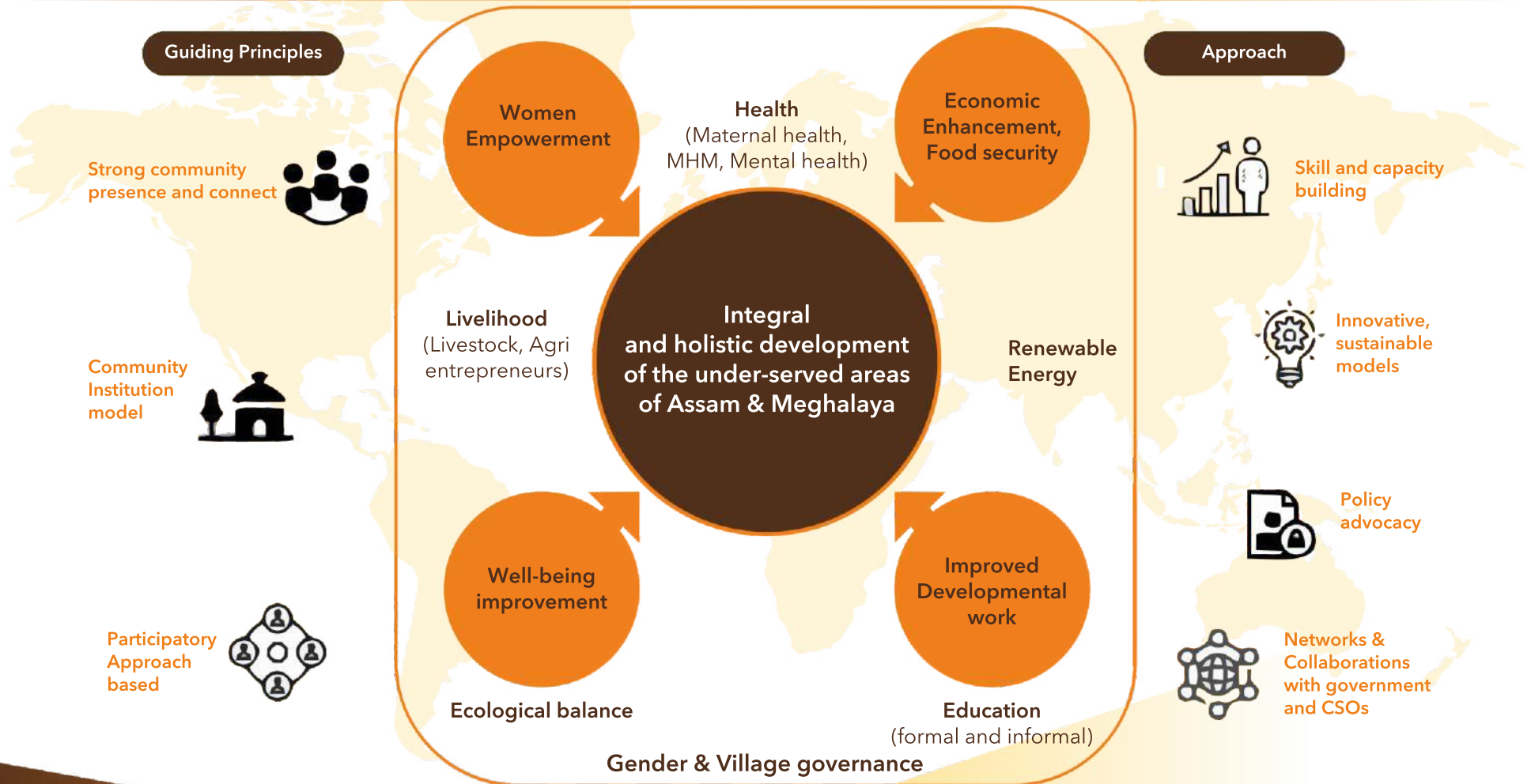


- 16.6. Develop effective, accountable, and transparent institutions at all levels
- 16.7. Ensure responsive, inclusive, participatory, and representative decision-making at all levels

In the SDGs targeted, some cut across other SDGs as a lens or approach. For example, SDG 7 are targeted by designing programmes with a strong clean energy lens

Our Theory of Change details out the pathways along which we look to bring about change, from Intervention to Outcome to Impact. This also highlights the cross-thematic nature of our work and the inter-linkages between different change pathways.

VISION: "TO BE A CHANGE AGENT ESPECIALLY FOR THE UNDER-PRIVILEGED & DEPRIVED CLASS OF RURAL AND URBAN AREAS, BUILDING SELF-SUSTAINING COMMUNITY, EMPOWERING THEM FOR TOTAL GROWTH TOWARDS A CIVIL SOCIETY" ▼



Diya Foundation works for the holistic development of the region. Keeping the geography breadth limited, we work across thematic areas in an integrated approach and we strive to be environmentally sustainable in our ways. Our collaboration with CBOs, Government and civil society makes this development sustainable in the long run.

Donors ▼



TATA TRUSTS



Networks & Grassroots' Partners ▼



KABIL



Knowledge / Resource Partners ▼



KABIL



Horticulture Research Station, Kahikuchi; Regional Institute of Livestock Entrepreneurship and Management, Rani; Assam Sericulture Department, Guwahati, Assam; State Veterinary Department, Assam; Central Plantation and Crop Research Institute, Kahikuchi, Guwahati